

II. Organization & Management

Comprehensive Economic Development Strategy and Planning Process:

The Big Sandy Area Development District (BSADD) is comprised of the five Eastern Kentucky counties of Floyd, Johnson, Magoffin, Martin and Pike. The Big Sandy ADD is a local planning district, governed by a Board of Directors. The board is made up of local officials and citizen members from each county within the district. In addition, various other boards and committees also operate under the umbrella of the development district structure. Some of these other planning and development bodies include but are not limited to: the Area Agency on Aging, Transportation Committee, Highway Safety Committee, Community Collaboration for Children, Regional KY Works, Revolving Loan Fund Committee, Mountain Housing Corporation, Big Sandy Water Management Council, Service Connection Corporation, Human Service Coordinating Council, Transportation Committee, Regional Preparedness and the Big Sandy Aging Advisory Council. These committees and boards were utilized along with other organizations and groups, to gather information and to provide input to the Big Sandy ADD Board of Directors, currently serving as the Comprehensive Economic Development Committee. Each board, committee, work group, and organization have been a valuable resource for the Big Sandy ADD as regards information, expertise and input in various planning and development initiatives.

The Big Sandy ADD is actively involved in a comprehensive statewide strategic planning process designed to encourage and empower community individuals, organizations and agencies to envision their regions future, and develop the necessary procedures and operations to achieve that future, through the utilization of all resources, assessment of the environment, long range planning to capitalize on its strengths and assets in responding to opportunities for economic growth and community development.

While units of government are closely involved with this planning process, the original CEDS document was a result of and owned by the citizens of the area. Through local planning and the grass roots method of data collection, this plan is an initial template and common vision for future economic and community development of the region.

Our region's development of the Comprehensive Economic Development Strategy (CEDS) is the evolution and enhancement of a body of work initially developed through the Kentucky 2001 Strategic Area Development Plan, which was established in 1993 and updated annually. The Kentucky 2001 plan guided us to look at our region, obtain citizen input, complete an information scan of our area, analyze at our strengths and weaknesses, develop goals for the region and strategies to meet those goals as a process to bring about positive change within our communities. CEDS is a continuation of that process providing greater guidelines and demanding measurable outcomes for the regions strategic planning process. The Big Sandy ADD's initial CEDS planning process began by requesting that the Board of Directors serve as the CEDS committee in 2002 to assist in the initial plan development and to begin the strategic planning

process with the understanding that in July 2002 a formal CEDS “Task Force” would be established to continue the planning process and begin review process for the annual report/update.

The contents of the initial plan, was developed through various planning processes and information gathering activities. It is a compilation of information obtained through the Big Sandy ADD’s review of plans by various agencies throughout the region. County economic development plans, results of “public hearings” held in FY2001 for the Overall Economic Development Plan (OEDP), compilation of area assessment information, demographic information, asset and liability mapping, utilization of staff expertise and knowledge base. As part of the BSADD’s effort to improve the organization and management of the planning and development process for the CEDS and the Annual Reports/Updates, as well as clarify the organizational structure of the BSADD and its functional committee’s for the 2005 Annual Report/Update, the individuals, organization and committee’s utilized in the process were strengthened and expanded. More structured and aggressive efforts were made to work with and obtain information and input from local officials, local leaders, BSADD Board members, BSADD functional committee members, BSADD CEDS Task Force, BSADD staff and local Business and Industry Leaders.

Additionally, the following are several of the BSADD’s standing committees, which have participated and proven instrumental in providing input for the Districts CEDS as well as the 2005 Annual CEDS Report Update:

- Big Sandy ADD Board
- Big Sandy CEDS Task Force
- Big Sandy Regional Industrial Development Authority
- BSADD Area Aging Advisory Council
- BSADD Human Services Coordinating Council
- Mountain Housing Corporation
- BSADD Regional Transportation Committee
- Big Sandy Regional Water Management Council
- Ombudsman Advisory Council
- Phelps Senior Housing, Inc.
- Inez Apartments, Inc.
- Blackberry-McCarr Development, Inc.
- BSADD Regional Highway Safety Committee
- Regional Incubator Board of Directors
- Community Collaborations for Children
- Big Sandy Regional Preparedness Council

The activities for the continued development of the CEDS and the annual updates center around the work of the CEDS Task Force. This task force has been charged with the continuation of the strategic planning process, the continual development, review,

revision and monitoring/ evaluation of the CEDS document as well as the development and reporting for all annual CEDS updates. The task force continues the development of the original body of work, and acts as the leading source within the region to facilitate local input and to rally regional support.

Additionally, the original CEDS document has been published and made available to the “public” as well as published on the District’s website to allow total access and to solicit information, input and ideas in regards to the planning document and the overall strategy.

The planning efforts and data collection focused around reviewing, continuing to complete and update the scan of the area, review of demographic information and research data, determining the strengths and weaknesses and the discussions around specific areas of issue, related to organization/governance, transportation, natural resources and physical environment, human resources, public protection/justice, economy, infrastructure and services, housing and health for the purpose of generating ideas and further developing an “action plan” (goals, objectives and strategies) for the overall plan and the annual updates.

The critical element and driving force of this strategic planning effort is the collaborative effort among all major interests within the region, as well as local citizenry input into the development and continuation of the planning process as a “spring board” for a common vision, the growth and development of the region. Understanding that the focus is two-fold, focus on the process of planning and on the establishment of a document, which would act as the “common strategy” for economic growth throughout our region.

Another element of the CEDS planning process that has been developed and will be ongoing is the promotion of regionalism, “active” participation and the collective by-in of common vision & goals as a key to economic and community development. The process supports the idea that economic development is made up of two perspectives 1) the business perspective which involves adding new capacity, reaching new markets, increasing production, producing new products or services to improve customer service, and to achieve vertical integration; and 2) the community perspective which consists of expanding and diversifying the economy, creating job opportunities, increasing area wage levels, increasing local tax revenues, developing the region as a good place to live and work and increasing business for local retailers, service providers and trades. The culmination of the entire CEDS process like other strategic planning efforts is to focus federal, state, local and private programs and funding towards the common goal, ultimately creating partnerships among each of these as a collective force to stimulate local economic growth.

One of the goals of the Big Sandy CEDS planning process is to engage all community players (local officials, local community leaders, Big Sandy ADD Board members, various groups, organizations and committee members, development authorities, major interests within the region, Big Sandy ADD staff, local citizenry and local industry) in an

on going participatory process to identify new ideas, needs, strengths and opportunities within their communities, counties and the region, and this has occurred. Expansion of this goal will create a flow of information from these individuals, groups, and committees to the ADD and the state, and disseminate information back to them, to allow ordinary citizens the opportunity to have input in what they consider the needs of their community and what is the vision and goals for the future.

The ultimate goal is through planning to facilitate a collective regional approach with a common vision/strategy for building a stable, diversified economy, creation of jobs with good wages and benefits, as well as addressing factors that effect quality of life for the residents of the Big Sandy area and that are significant factors in attracting new business/industry into the region. This process, like all strategic planning efforts, is to also focus federal, state, local and private initiatives, programs and funding towards common goals to further economic growth and the regions success.

Emphasis is still placed on the creation of jobs and an overall improvement in the regions economy. Quality of life factors remain important and are still significant factors in attracting & retaining business/industry and people to the area.

The District's Planning committee has several key points/observations about what strategic planning is:

- The process by which we envision our own future and develop the tools and resources needed to achieve that future.
- Strategic planning is never completed.
- The future can be influenced and changed by the actions we do today.
- The planning process is simply a tool to gain a better understanding of our region, our role in its development, a sense of what the communities desire and a means to develop objectives, milestones to determine progress and clear effective actions for achieving those objectives.
- That economic development is “a deliberate program of action, through community based effort, to impact the location of new business investment and to build on the investment of existing business through expansion”.
- That community development requires a holistic approach and is “a process of people working together to create and/or preserve their desired community in its economic, social, political, environmental and spiritual dimensions.”

Statement of Vision:

“Strong sustainable communities within the Region, built upon a diverse, sound economy, with vast employment opportunities, strong education systems, safe and nurturing environment, good housing, accessible and affordable health care; communities driven by local individuals working together to achieve their full potential- Eastern Kentucky as the “utopia” of the new millennium”.

Authority

The Big Sandy Area Development District is a multi-county, sub-state region authorized and organized pursuant to Statutes of the Commonwealth of Kentucky (KRS 147A). The designated member jurisdictions of the District comprise the eastern most region of Kentucky, and include Floyd County, Johnson County, Magoffin County, Martin County, and Pike County. The District is managed by a Board of Directors, members of which are widely representative of local government leadership, both county and municipal, and the leadership in private and public sector fields deemed critical to the development of the Region. The specific operations and functions of the District are further authorized by approved by-laws and stated policies.

History

The Big Sandy Area Development District was an early participant in the multi-county intergovernmental cooperation experiment that has been tried in this country for just over two decades. The formal beginning is credited to the creation of the first legally recognized multi-county planning and development district (LDD) in the state of Georgia in 1960. However, even at that time Eastern Kentucky counties were involved with the concept. In September 1956 the Eastern Kentucky Development Council was formed by civic groups of the region. As a result of their efforts the State of Kentucky gave status to the group by creating the Eastern Kentucky Regional Planning Commission in August 1957. John Whisman was named Executive Director.

From this agency came the report, Program 60 - A Decade of Action For Progress In Eastern Kentucky; published January 1, 1960. In addition to proposing a coalition of Appalachian states in what would become and is now the Appalachian Regional Commission, the report also recommended, "the establishment of Area Development Associations in at least the four river valley areas (of Eastern Kentucky) to gear action on common problems and development opportunities for their communities and citizens." Governor Bert Combs, a long time resident of the Big Sandy Region, was a major driving force behind the creation of the ADD's and ARC.

As a result of experimenting with multi-county groupings in the early 1960's, the counties of Floyd, Johnson, Lawrence, Magoffin, Martin and Pike formed the Big Sandy Area Development Council, Inc., on April 26, 1965. This agency, minus Lawrence County, received its first operational funding in January with staff assuming their

positions on February 1, 1968. The Big Sandy Area Development Council was reorganized and renamed the Big Sandy Area Development District on September 16, 1969.

Chronology of Major Events

September 7, 1956:

Creation of the Eastern Kentucky Regional Development Council.

August 15, 1957:

The Eastern Kentucky Regional Planning Commission was officially created under Kentucky Law.

January 1, 1960:

Publication of Program 60 - A decade of Action for Progress in Eastern Kentucky.

May 1, 1961:

The Area Redevelopment Act was signed.

April 13, 1963:

Creation of the President's Appalachian Regional Commission.

November 27, 1963:

The Kentucky Area Development Office (KADO) was created by Executive Order.

March 7, 1965:

The Appalachian Regional Development act was signed into law.

April 26, 1965:

Creation of the Big Sandy Area Development Council, Inc. (BSADC).

April 1, 1967:

By Executive Order of the Governor, the boundaries of the fifteen Area Development Districts in Kentucky were established as recommended by KADO.

January 1, 1968:

Funding authorized for the BSADC as a Local Development District by ARC.

March 1, 1968:

BSADC Staff assumed their duties.

June 28, 1968:

The Kentucky Program Development Office (KPDO) was established by Executive Order.

September 19. 1968:

BSADC was designated as an Economic Development District by EDA (the first district in the 13-state Appalachian Region to be so designated).

September 8. 1969:

By Executive Order of the Governor, the BSADC was designated one of Kentucky's 15 Area Development Districts and as the official Regional Clearinghouse for OMB Circular A-95 Program/Project Review Process.

September 16. 1969:

The Big Sandy ADC was reorganized and incorporated as the Big Sandy Area Development District. (BSADD) to include the counties of Floyd, Johnson, Magoffin, Martin and Pike.

October 28. 1971:

The Big Sandy ADD was certified by the Department of Housing and Urban Development as the official area-wide planning organization of this region.

February 10. 1972:

The Kentucky General Assembly created and established the Big Sandy ADD as one of Kentucky's 15 ADD's and gave them the authority to act as a Regional Clearinghouse.

January 1. 1973:

By executive order of the Governor, KPDO and the Kentucky Department of Finance were consolidated in the Governor's Office, and designated the Department for Local Government. State fiscal support for ADDs was increased.

July 1. 1974:

The District received the designation of Area Agency on Aging from the Cabinet for Human Resources, Division of Aging Services.

July 1975 through Present

The Big Sandy ADD is actively involved in local, regional, state and national planning programs; engages in development and technical assistance activities; maintains a participatory membership in all associations of value to local governments; and actively pursues human service and economic development programs and projects in and for the region.

Mission Statement:

A. Statutory Mission-

- Act as the direct link between citizens and government officials and the Governor's Office through the Department of Local Government.
- Provide a link between local governments and state government.

- Act in partnership with local governments.
- Assist local governments in working together to achieve goals that require regional coordination.
- Serve as a multi-function organization; council of governments, a sub-state regional planning district, regional clearinghouse for the coordination of public and private investment in the region
- Provide technical assistance to both public and private sectors
- Organize, implement and administer various programs and services at the local, regional and state level
- Maintain a broad focus on area issues that includes but is not limited to economic development, community planning & development, area organizations and governance, human services, health, transportation, infrastructure, information and technology, justice, housing and natural resources.

B. Mission by Corporate By-Laws-

- Serve as a development resource to the Counties of Floyd, Johnson, Magoffin, Martin and Pike, and the subdivisions thereof, and the Cities of Allen, Coal Run Village, Elkhorn City, Inez, Martin, Paintsville, Prestonsburg, Salyersville, Warfield, Wayland and Wheelwright.
- Serve as the area wide development and planning agency, seeking mutual support and consensus for goals and project prioritization;
- Promote the general welfare and health of the citizens of the Counties within the region;
- Advance growth and development within the region, focusing on quality of life, education, commercial/industrial as well as social and cultural interests;
- Implement programs and objectives established by the General Assembly and/or Governor of the Commonwealth of Kentucky, as prescribed by the Board of Directors;
- Implement programs established by the US Congress and by Executive Order of the President, as prescribed by the Board of Directors;
- Provide technical assistance to local governments with regard to program development and coordination as well as project implementation and administration.

C. Adopted Mission-

The mission and purpose of the Big Sandy Area Development District is one that is threefold:

- To provide those citizens of Kentucky living in Floyd, Johnson, Magoffin, Martin and Pike counties a regional leadership forum,

responsible for area wide planning and coordination of service and development projects undertaken in cooperation with the Commonwealth of Kentucky and designated agencies of the federal government.

- Serve the member jurisdictions, their subdivisions, and non-profit groups related thereto, as a legally constituted body capable of performing administrative services and implementing programs and projects, which improve the quality of life within the region.
- Support, assist and promote private sector developmental and entrepreneurial efforts within the region so as to enhance employment opportunity and to bring about a greater diversification in the base elements of the region's economy.

Big Sandy Area Development District 2005 Board of Directors

Floyd County		Position		Appointment	Term		
Name	County	Office	on Board	Race	Sex	to Boeard	Expires
Hon. Paul Hunt Thompson County Judge/Executive Suite 9, 149 South Cental Ave. Prestonsburg, KY 41653	Floyd	(606)886-9193	County Judge/Executive	Cauc.	M	1/16/2003	12/31/2006
Hon. Jerry Fannin (Treasurer) Mayor of Prestonsburg 200 North Lake Dr. Prestonsburg, KY 41653	Floyd	(606)886-2335	Mayor of Prestonsburg	Cauc.	M	1/16/2003	12/31/2006
Hon. Thomasine Robinson Mayor of Martin P.O. Box 749 Martin, KY 41649	Floyd	(606)285-9335	Fourth Class City Repr.	Cauc.	F	1/16/2003	12/31/2006
Hon. Sharon Woods Mayor of Allen P.O. Box 413 Allen, KY 41601	Floyd	(606)886-1094	Fifth & Sixth Class City Repr.	Cauc.	F	1/16/2003	12/31/2006
Mr. Phillip Hunt P.O. Box 508 Prestonsburg, KY 41653	Floyd	(606)886-2318	Judge Exec. Appointee/Repr.	Cauc.	M	1/16/2003	12/31/2006
Mr. Burl Spurlock First Commonwealth Bank 311 N. Arnold Avenue Prestonsburg, KY 41653	Floyd	(606)886-2321	Citizen Repr.	Cauc.	M	1/16/2003	12/31/2005

Source: BSADD

Big Sandy Area Development District

Big Sandy Area Development District 2005 Board of Directors Continued

Johnson County	County	Office	Position on Board	Race	Sex	Appointment to Boeard	Term Expires
Hon. Roger T. Daniel (Chair) County Judge/Executive P.O. Box 15 Paintsville, KY 41240	Johnson	(606)789-2550	County Judge/Executive	Cauc.	M	1/16/2003	12/31/2006
Hon. Doug Pugh Mayor of Paintsville P.O. Box 71 Paintsville, KY 41240	Johnson	(606)789-2600	Mayor of Paintsville	Cauc.	M	1/16/2003	12/31/2006
Ms. Lillian Wheeler Johnson Co. Fiscal Court P.O. Box 868 Paintsville, KY 41240	Johnson	(606)789-2550	Judge Exec. Appointee/Repr.	Cauc.	F	1/16/2003	12/31/2006
Ms. Susan Howard Dept. of Social Services P.O. Box 1151 Paintsville, KY 41240	Johnson	(606)789-6251	Regional Low-I ncome Repr.	Cauc.	F	1/16/2003	12/31/2005
Mr. Paul Williams 6161 HWY 40 West Staffordsville, KY 41256	Johnson	(606)297-4863	Citizen Repr.	Cauc	M	1/16/2003	12/31/2005
Magoffin County							
Hon. Bill May County Judge/Executive 5720 Royalton Rd. Salyersville, KY 41465	Magoffin	(606)349-2313	County Judge/Executive	Cauc.	M	1/16/2003	12/31/2006
Hon. Stanely Howard Mayor of Salyersville P.O. Box 640 Salyersville, KY 41465	Magoffin	(606)349-2409	Mayor of Salyersville	Cauc.	M	1/16/2003	12/31/2006
Ms. Donna Adams P.O. Box 233 Salyersville, KY 41465	Magoffin	(606)349-2313	Judge Exec. Appointee/Repr.	Cauc.	F	1/16/2003	12/31/2006
Ms. Doris Barnett (Secretary) 1485 Old Burning Fork Road Salyersville, KY 41465	Magoffin	(606)349-3261	Citizen Repr.	Cauc.	F	1/16/2003	12/31/2005

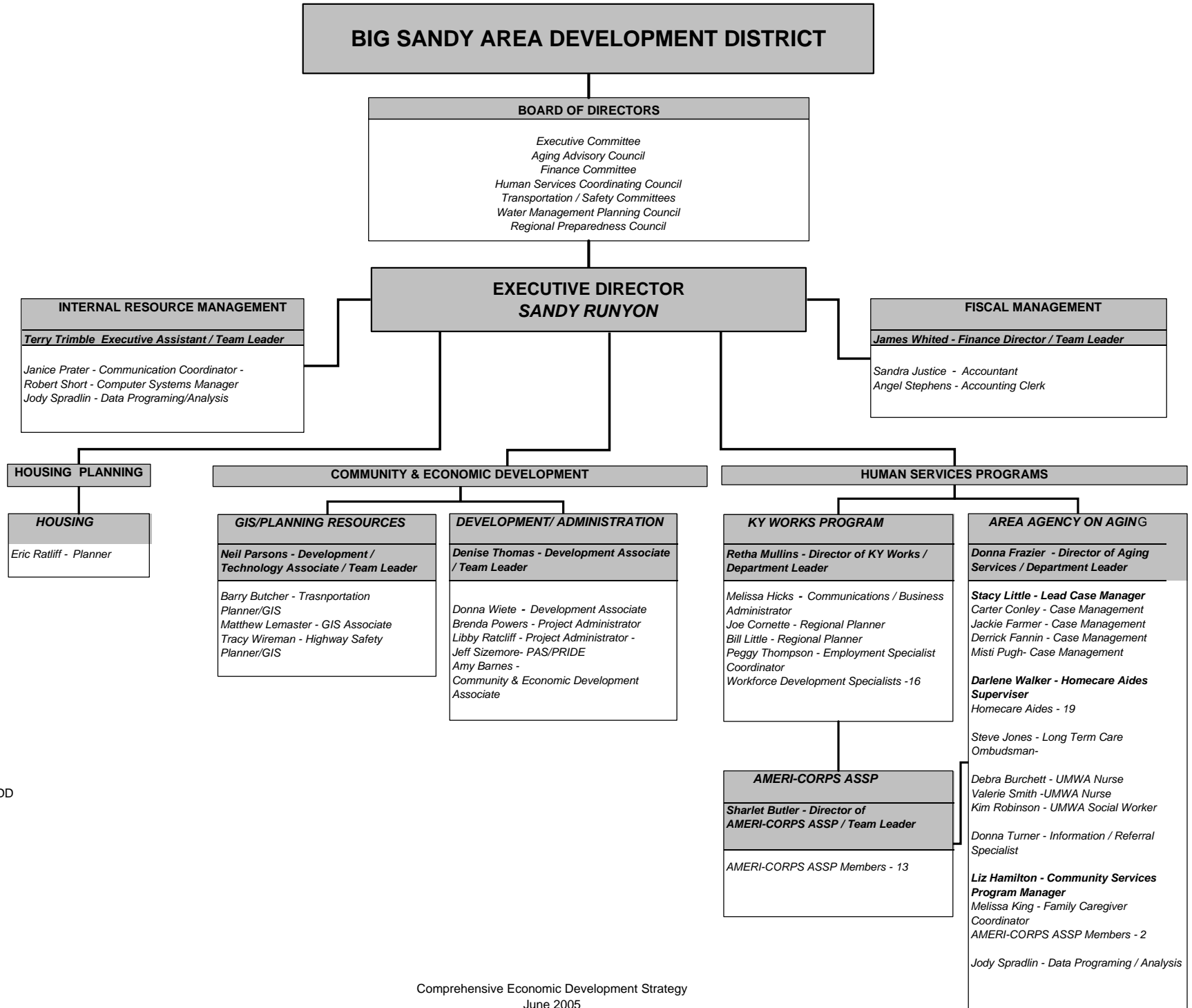
Source: BSADD

Big Sandy Area Development District

Big Sandy Area Development District 2005 Board of Directors Continued

Martin County	Name	County	Office	Position on Board	Race	Sex	Appointment to Boeard	Term Expires
	Hon. Kelly Callaham (Vice Chair) County Judge/Executive P.O. Box 309 Inez, KY 41224	Martin	(606)298-2800	County Judge/Executive	Cauc.	M	1/16/2003	12/31/2006
	Hon. Joe Hammond Mayor of Inez P.O. Box 711 Inez, KY 41224	Martin	(606)298-4602	Mayor of Inez	Cauc.	M	1/16/2003	12/31/2006
	Ms. Sara Mae Callaham P.O. Box 388 Inez, KY 41224	Martin	(606)298-3746	Judge Exec. Appointee/Repr.	Cauc.	F	1/16/2003	12/31/2006
	Mr. Craig Preece Pocahontas Development Corp. P.O. Box 274 Lovely, KY 41231	Martin	(606)395-6825	Citizen Repr.	Cauc.	M	1/16/2003	12/31/2005
Pike County								
	Hon. Bill Deskins (2nd Vice Chair) County Judge/Executive 324 Main Street Pikeville, KY 41501	Pike	(606)432-6247	County Judge/Executive	Cauc.	M	1/16/2003	12/31/2006
	Hon. Frank Justice Mayor of Pikeville 118 College Street Pikeville, KY 41501	Pike	(606)437-5100	Mayor of Pikeville	Cauc.	M	1/16/2003	12/31/2006
	Hon. Richard Salyer Mayor of Elkhorn City Elkhorn City, Elkhorn City Hall Elkhorn City, KY 41522	Pike	(606)754-8826	Mayor of Elkhorn City	Cauc.	M	1/16/2003	12/31/2006
	Ms. Kitty White Pike County Chamber 225 College Street Pikeville, KY 41501	Pike	(606)432-5504	Judge Exec. Appointee/Repr.	Cauc.	F	1/16/2003	12/31/2006
	Mr. Micky Anders P.O. Box 2746 Pikeville, KY 41502	Pike	(606)432-4770	Citizen Repr.	Cauc.	M	1/16/2003	12/31/2005

Source: BSADD



Source: BSADD

COMMITTEE LISTINGS

BSADD Board of Directors Executive Committee:

Judge Ex., Tucker Daniel, Johnson County
Judge Ex. Kelly Callaham, Martin County
Judge Ex. Bill Deskins, Pike County
Mayor Jerry Fannin, Floyd County
Doris Barnett, Magoffin County

Big Sandy Regional CEDS Task Force:

Sandy Runyon, BSADD
Mayor Doug Pugh, Johnson County
Judge Ex., Tucker Daniel, Johnson County
Judge Ex. Paul Hunt Thompson, Floyd County
Judge Ex. Kelly Callaham, Martin County
Judge Ex. Bill Deskins, Pike County
Judge Ex. Bill May, Magoffin County
Mayor Jerry Fannin, Floyd County
Mayor Frank Justice, Pike County
Kathy Hembree, Magoffin County
Mike Howell, Johnson County
David Pelphrey, Johnson County
Ben Hale, Floyd County
Ewelle Baltrip, Perry County
Tom Jones, Perry County
Kathy Rubado, Floyd County
Debbie Allen, Floyd County
Robyn Lee, Pike County
Regina Becknell, Floyd County
Dennis Dorton, Johnson County
Terry Spears, Pike County
Deborah Puckett, Pike County
Joyce Hinkle, Floyd County
Burl Spurlock, Floyd County
David Ellis, Floyd County
Clark Allison, Johnson County
Jean Rosenberg, Floyd County
Bertie Salyer, Magoffin County
Glendia Sawyers, Pike County
Kitty White, Pike County
Larry Herald, Johnson County
Chestina Blanton, Floyd County
Retha Mullins, BSADD
Terry Trimble, BSADD
Eric Ratliff, BSADD
Denise Thomas, BSADD
Amy Barnes, BSADD
Barry Butcher, BSADD
Donna Frazier, BSADD
Brenda Powers, BSADD

Libby Ratcliff, BSADD
Neil Parsons, BSADD
Tracy Wireman BSADD
Jeff Sizemore BSADD
Donna Wiete BSADD
Marilynn Payson, Pike County

Big Sandy Regional Industrial Development Authority:

Mike Duncan, Martin County
Jim Booth, Martin County
Dennis Dorton, Johnson County
A.B. Conley Magoffin County
Barkley Sturgill, Floyd County
Paul Patton, Pike County

Paintsville/Johnson County Regional Business Incubator Board of Directors

Mayor Doug Pugh, Johnson County
Judge Ex., Tucker Daniel, Johnson County
Dr. George Edwards, Floyd County
Dennis Dorton, Johnson County
Mike Duncan, Martin County
Kelli Hall, Johnson County
Marilynn Payson, Johnson County
Sandy Runyon, Floyd County
Cheryl Moorhead Stone, Madison County
Mark McKenzie, Johnson County
Tom Jones, Perry County
Fran Jarrell, Johnson County

(Non-voting)
Ewell Baltrip
David Pelphrey, Johnson County
Stephanie Stumbo, Floyd County
Steve Carter, Floyd County
Robin Lee, Floyd County
Eric Mills, Martin County

Area Aging Advisory Council:

Emogene Burton Chandler, Johnson County
James Butler, Floyd County
Beverly Carroll, Floyd County
Roney Clark, Floyd County
Walter Coleman, Pike County
Georgetta Cook, Pike County
Bertha Daniels, Floyd County
Teresa Gullett, Floyd County
Eula Hall, Floyd County
Gloria Hall, Pike County

Greg Hamlin, Pike County
George Hodge, Pike County
Shular Hurd, Floyd County
Jim Kelly, Floyd County
Carolyn Horn, Martin County
Clayton Little, Pike County
Mike Wiley, Johnson County
Vicki Spencer, Floyd County
Virginia Artrip, Floyd County
Diana Thacker, Pike County
Mary Trimble, Magoffin County
Melissa Vance, Johnson County
Lillian Wheeler, Johnson County

Community Collaborations for Children:

Susan Howard, Johnson County
John Chaney, Johnson County
Bonnie Hale, Floyd County
Lisa Murray, Johnson County
Wendy Blair, Johnson County
Anita Cantrell, Johnson County
Chris Conley, Floyd County
Joyce Worrix, Pike County
Brenda Minix, Johnson County
Marsha Castle, Johnson County
Sheila Cox, Johnson County
Linda May, Floyd County
Kathy Bohr, Johnson County
Wendell Slone, Floyd County
Lynn Mason, Franklin County
Troy Price, Pike County
Bertie K. Salyer, Magoffin County
Donna Frazier, BSADD
Margaret Banks, Floyd County
Abby Pinson, Johnson County

Human Services Coordinating Council:

Jean Rosenberg, Floyd County
Margaret Banks, Floyd County
Glenda Hall, Floyd County
Diane Blackburn, Johnson County
Tammy Compton, Floyd County
John Rosenberg, Floyd County
Vanessa Tackett, Floyd County
Kathy Rubado, Floyd County
Steve Jones, BSADD
Donna Frazier, Johnson County
Retha Mullins, BSADD
Bertha Daniels, Floyd County
David Pelphrey, Johnson County
Bonnie Hale, Floyd County

Linda May, Floyd County
Gwen Hall, Floyd County
Carol Napier, Floyd County
Lisa Forsyth, Pike County
Clara Johnson, Floyd County
Deborah Allen, Magoffin County
Cheri Williams, Magoffin County
Irene Thacker, Pike County
Linda May, Floyd County
Sylvia Robinette, Magoffin County
Lois Dunn, Magoffin County
Mary Hereford, Johnson County
Mike Howell, Johnson County
Paul Hopkins, Pike County
Susan Howard, Johnson County
Leonard Cieslak, Floyd County
Jackie Bowling, Floyd County
Denise Thomas BSADD

Ombudsman Advisory Council:

Thelma Push, Magoffin County
Vicki Spencer, Floyd County
Liz Hamilton, BSADD
Denise Adkins, Pike County
Dana Caudill, Floyd County
Teresa Gullett, Johnson County
Bertha Daniels, Floyd County

Mountain Housing Corporation:

Sandy Runyon, BSADD
Lillian Wheeler, Johnson County
Doris Barnett, Magoffin County
Diana Thacker, Pike County
Jannas B. Hatfield, Pike County
Michael Howell, Johnson County
Tony Carrico, Pike County

Phelps Senior Housing, Inc.:

Sandy Runyon, BSADD
Lillian Wheeler, Johnson County
Doris Barnett, Magoffin County
Diana Thacker, Pike County
Jannas Hatfield, Pike County
Michael Howell, Johnson County
Tony Carrico, Pike County

Inez Apartments, Inc.:

Sandy Runyon, BSADD
Doris Barnett, Magoffin County

Lillian Wheeler, Johnson County
Diana Thacker, Pike County
Jannas Hatfield, Pike County
Michael Howell, Johnson County
Tony Carrico, Pike County

Blackberry-McCarr Development, Inc.

Sandy Runyon, BSADD
Doris Barnett, Magoffin County
Lillian Wheeler, Johnson County
Diana Thacker, Pike County
Jannas Hatfield, Pike County
Michael Howell, Johnson County
Tony Carrico, Pike County

**BSADD Regional Transportation /
Highway Safety Committee:**

Burl W. Spurlock, Floyd County
Mayor Doug Pugh, Johnson County
Judge Ex., Tucker Daniel, Johnson County
Judge Ex. Paul Hunt Thompson, Floyd County
Judge Ex. Kelly Callaham, Martin County
Judge Ex. Bill Deskins, Pike County
Judge Ex. Bill May, Magoffin County
Mayor Jerry Fannin, Floyd County
Mayor Stanley Howard, Magoffin County
Mayor Frank Justice, Pike County
Brett Davis, Floyd County
David Sanders, Pike County
John Johnson, Pike County
Linda May, Floyd County
Mayor Richard Young, Martin County
Doris Barnett, Magoffin County
Keith Damron, Pike County
Bill Madden, Breathitt County
Paul Bailey, Magoffin County
Willard Cazzort, Pike County
Barry Butcher, BSADD
Tracy Wireman, BSADD
Greg Couch, Pike County
Marty Slone, Johnson County
T.C. Music, Johnson County
Dennis Dorton, Johnson County
Mike Crum, Martin County
Mary Begley, Perry County
John K. Blackburn, Floyd County
Dewey Bocook, Johnson County
Jim Booth, Martin County
Darrel Conley, Floyd County
Carter Conley, Magoffin County
Greg Hamlin, Floyd County
Genny O'Brien, Floyd County
Randy Polk, Floyd County

Marcia Salyer, Floyd County
Martin Slone, Pike County
Doug Tackett, Pike County
Sheriff Bill Whitten, Johnson County
Charles Neeley, Pike County
Capt. Jim Booth, Pike County
Kitty White, Pike County

Regional Water Management Council:

Judge Ex., Tucker Daniel, Johnson County
Judge Ex. Paul Hunt Thompson, Floyd County
Judge Ex. Kelly Callaham, Martin County
Judge Ex. Bill Deskins, Pike County
Judge Ex. Bill May, Magoffin County
Mayor Sharon Woods, Floyd County
Mayor Thomasine Robinson, Floyd County
Mayor Jerry Fannin, Floyd County
Mayor Tommy Murphy, Floyd County
Mayor David Sammons, Floyd County
Mayor Doug Pugh, Johnson County
Mayor Stanley Howard, Magoffin County
Mayor Richard Young, Martin County
Mayor Clayborne Hayes, Martin County
Mayor Phyllis Muncy, Pike County
Mayor Richard Salyer, Pike County
Mayor Frank Justice, Pike County
Bob Meyer, Floyd County
David Ellis, Floyd County
Gary McCoy, Floyd County
Larry Herald, Johnson County
Thomas Howard, Magoffin County
Greg Scott, Martin County
Roger Recktenwald, Pike County
Will Brown, Pike County
Terry Taylor, Pike County
Phil Ward, Floyd County
Joseph Jacob, Floyd County
Bill Cantrell, Magoffin County
Thursa Slone, Floyd County
Russell Briggs, Johnson County
Patrick Boyd, Magoffin County
John Bailey, Martin County
Sam Prator, Pike County
Joe Hammond, Martin County
Charles Muncy, Martin County

Regional Preparedness Council:

Judge Ex., Tucker Daniel, Johnson County
Judge Ex. Paul Hunt Thompson, Floyd County
Judge Ex. Kelly Callaham, Martin County
Judge Ex. Bill Deskins, Pike County
Judge Ex. Bill May, Magoffin County
Mayor Sharon Woods, Floyd County

Big Sandy Area Development District

Mayor Thomasine Robinson, Floyd County
Mayor Jerry Fannin, Floyd County
Mayor Tommy Murphy, Floyd County
Mayor David Sammons, Floyd County
Mayor Doug Pugh, Johnson County
Mayor Stanley Howard, Magoffin County
Mayor Richard Young, Martin County
Mayor Clayborne Hayes, Martin County
Mayor Phyllis Muncy, Pike County
Mayor Richard Salyer, Pike County
Mayor Frank Justice, Pike County
Larry Herald, Johnson County
David Ellis, Floyd County
Keith Damron, KY Highway Dept. - Dist. 12
Willard Cazzort, KY Highway Dept. - Dist. 12
Capt. Jim Booth, KSP
Doug Tackett, Pike County
Carter Conley, Magoffin County
Marcia Salyer, KyEM
Greg Hamlin, Floyd County
Dewey Bocook, Johnson County
Mary Begley, AEP
Lieutenant Lynn Cross, KSP
Lyle Snider, Floyd County
Marcia Salyer, Magoffin County
Lon May, Floyd County
Peggy Bach, American Red Cross
Phil Hysell, NOAA – National Weather Service
Rick Meece, Johnson County
Peggy Rasnick-Justice, Pike County
Roy Boggs – KY Division of Forestry
Sheriff Garmand Preece, Martin County
Michael “Dip” Stafford, Johnson County
Stephen Harris, USACE
Superintendent Paul Fanning, Floyd County
Ted Withrow, KY DOW
Terry Fraley, Martin County
Thursa Sloan, Floyd County
Tim Hatfield, Pike County
Neil Parsons, BSADD

Special Districts Cont.

Johnson	West Van Lear Fire Protection District	P. O. Box 723	West Van Lear	41268	606-789-1957
Johnson	Thealka Fire Protection District	1667 KY Rt. 581, Box 10	Paintsville	41240	606-789-8218
Johnson	Williamsport Fire Protection District	310 KY Rt. 1596	Boonscamp	41204	606-789-6078
Johnson	Van Lear Fire Protection District	38 Silk Stocking Look	Van Lear	41265	606-789-8320
Johnson	Red Bush Fire Protection District	2389 KY. Rt. 469	Red Bush	41219	606-265-3264
Johnson	W. R. Castle Fire Protection District	P. O. Box 610	Wittensville	31274	606-297-4845
Johnson	Rockhouse Fire Protection District	P. O. Box 189	Hager Hill	41222	606-297-6117
Johnson	Oil Springs Fire Protection District	P. O. Box 200	Oil Springs	41238	606-297-4600
Magoffin	County Soil & Water Conservation District	P. O. Box 965	Salyersville	41465	606-349-1919
Magoffin	County Extension Taxing District	P. O. Box 349	Salyersville	41465	606-349-1236
Magoffin	County Library Taxing District	P. O. Box 435	Salyersville	41465	606-349-4477
Magoffin	County Public Health Taxing District	723 Parkway Drive	Salyersville	41465	606-349-6212
Magoffin	County Water District	P. O. Box 490	Salyersville	41465	606-349-6812
Magoffin	County Housing Authority	P. O. Box A-0, Allen Drive	Salyersville	41465	606-349-6554
Magoffin	Magoffin County Water District	P. O. Box 490	Salyersville	41465	606-349-6812
Magoffin	District III Fire Protection District	5710 Royalton Road	Salyersville	41465	606-884-8800
Magoffin	Salyersville Fire Protection District	P. O. Box 640	Salyersville	41465	606-349-3256
Magoffin	North Magoffin Fire Protection District	4845 Coon Creek Road	Salyersville	41465	606-349-7777
Magoffin	Middle Fork Fire Protection District	1019 Dixie Avenue	Salyersville	41465	606-349-3973
Magoffin	Bloomington Mountaineer Fire Protection District	2405 Buffalo Road	Salyersville	41465	606-349-3473
Martin	County Soil & Water Conservation District	P. O. Box 392	Inez	41224	606-298-3595
Martin	County Extension District	P. O. Box 325	Inez	41224	606-298-7575
Martin	County Housing Authority	P. O. Box 316	Warfield	41267	606-395-5575
Martin	Public Health Taxing District	P. O. Box 346	Inez	41224	606-298-7752
Martin	County Library Taxing District	P. O. Box 1318	Inez	41224	606-298-7766
Martin	County Water District #1	HC 69, Box 875	Inez	41224	606-298-3885
Martin	Inez Fire Protection District	P. O. Box 1271	Inez	41224	606-298-3211
Martin	Warfield Fire Protection District	P. O. Box 317	Warfield	41267	606-395-5157
Martin	Pigeon Roost Fire Protection District	P. O. Box 308	Warfield	41267	606-395-6055
Martin	Turkey Fire Protection District	HC 69, Box 1245	Inez	41224	606-298-7324
Pike	County Soil & Water Conservation District	142 Baird Avenue	Pikeville	41501	606-432-4695
Pike	County Extension District	148 Trivett Drive	Pikeville	41501	606-432-2534
Pike	Public Health Taxing District	119 River Drive	Pikeville	41501	606-437-5500
Pike	County Library Taxing District	119 College Street	Pikeville	41501	606-432-9977
Pike	County Industrial Development Authority	324 Main Street	Pikeville	41501	606-437-9876
Pike	County Housing Authority	P. O. Box 1468	Pikeville	41501	606-432-4178
Pike	County Airport	330 Airport Road	Pikeville	41501	606-437-5386
Pike	Mountain Water District	6324 Zebulon Hwy	Pikeville	41501	606-631-9162

**BIG SANDY AREA DEVELOPMENT DISTRICT
SPECIAL DISTRICTS**

County	Agency	Address			Phone
Floyd	County Soil & Water Conservation District	P. O. Box 29	Prestonsburg	41653	606-889-9800
Floyd	County Library Taxing District	161 North Arnold Avenue	Prestonsburg	41653	606-886-6113
Floyd	Public Health Taxing District	144 North Front Avenue	Prestonsburg	41653	606-886-2788
Floyd	County Extension District	921 South Lake Drive	Prestonsburg	41653	606-886-2668
Floyd	Auxier Fire Protection District	218 Railroad Street	Auxier	41602	606-889-0773
Floyd	Betsy Layne Fire Protection District	22 George Road	Betsy Layne	41605	606-478-5555
Floyd	Maytown Fire Protection District	376 Rt. 777	Maytown	41645	606-285-9698
Floyd	Garrett Fire Protection District	2012 Stone Coal Road	Garrett	41630	606-358-3473
Floyd	Allen Fire Protection District	142 Court Street	Prestonsburg	41653	606-874-8191
Floyd	Cow Creek Fire Protection District	151 Caldwell Drive	Prestonsburg	41653	606-874-9500
Floyd	Wayland Fire Protection District	345 KY Rt. 1086	Wayland	41666	606-358-9600
Floyd	Mudcreek Fire Protection District	P. O. Box 99	Grethel	41631	606-587-2880
Floyd	David Fire Protection District	P. O. Box 20	David	41616	606-886-0770
Floyd	Left Beaver Fire Protection District	P. O. Box 396	McDowell	41647	606-377-6773
Floyd	Middle Creek Fire Protection District	Rt. 1, Box 4028	Prestonsburg	41653	606-886-9097
Floyd	Toler Creek Fire Protection District	649 Main Toler Road	Harold	41635	606-478-4444
Floyd	County Public Housing Authority	12 Flaime Hall Street	Prestonsburg	41653	606-886-2717
Floyd	Martin Housing Authority	P. O. Box 806	Martin	41649	606-285-3681
Floyd	Appalachian Industrial Authority	110 Resource Court	Prestonsburg	41653	606-886-2374
Floyd	County Development Authority	Floyd County Annex	Prestonsburg	41653	606-886-9193
Floyd	Big Sandy Regional Industrial Development Authority	110 Resource Court	Prestonsburg	41653	606-886-2374
Floyd	Big Sandy Regional Airport Authority	HC 64, Box 926	Debord	41214	606-298-5930
Floyd	Big Sandy Area Development District	110 Resource Court	Prestonsburg	41653	606-886-2374
Floyd	Southern Water District	P. O. Box 610	McDowell	41647	606-377-9296
Floyd	Sandy Valley Water District	P. O. Box 127	Betsy Layne	41605	606-478-5500
Johnson	Big Sandy Community Action Program	Johnson County Courthouse - 3rd Floor	Paintsville	41240	606-789-3641
Johnson	Big Sandy Regional Detention Center	P. O. Box 1390	Paintsville	41240	606-297-5245
Johnson	County Public Health Taxing District	630 Trimble Blvd.	Paintsville	41240	606-789-2590
Johnson	County Library Taxing District	444 Main Street	Paintsville	41240	606-789-4355
Johnson	County Housing Authority	P. O. Box 189	Thelma	41260	606-789-5212
Johnson	Paintsville Housing Authority	700 6th Street	Paintsville	41240	606-789-1782
Johnson	County Extension Taxing District	P. O. Box 806	Paintsville	41240	606-789-8108
Johnson	County Soil & Water Conservation District	100 Left Fork, Teays Branch Road	Paintsville	41240	606-789-7706
Johnson	Paintsville Fire Protection District	P. O. Box 1488	Paintsville	41240	606-789-7376
Johnson	Johnson County Fire Protection District	P. O. Box 1588	Paintsville	41240	606-297-5555
Johnson	Flat Gap Fire Protection District	5218 Ky. Hwy. 172	Flat Gap	41219	606-265-4200
Johnson	River Fire Protection District	P. O. Box 105	River	41268	606-789-5988

Special Districts Cont.

Pike	Belfry Fire Protection District	P. O. Box 281	Belfry	41514	606-353-8026
Pike	Big Creek Fire Protection District	P. O. Box 110	Canada	41519	606-353-9409
Pike	Blackberry Fire Protection District	P. O. Box 665	McCarr	41544	606-427-7308
Pike	Coal Run Fire Protection District	95 Church Street	Pikeville	41501	606-432-5801
Pike	Dorton Fire Protection District	P. O. Box 285	Dorton	41520	606-639-8165
Pike	Elkhorn City Fire Protection District	P. O. Box 990	Elkhorn City	41522	606-754-8041
Pike	Feds Creek Fire Protection District	P. O. Box 100	Feds Creek	41524	606-835-1543
Pike	Ferrell's Creek Fire Protection District	180 Honey Fork Road	Belcher	41513	606-478-4491
Pike	Grapevine Fire Protection District	16061 Grapevine Road	Phyllis	41554	606-835-2111
Pike	Greasy Creek Fire Protection District	121 Ripley Branch Road	Shelbiana	41562	606-432-4659
Pike	Gulnare Fire Protection District	1586 Sycamore Road	Pikeville	41501	606-432-8502
Pike	Hatfield Fire Protection District	8619 North Big Creek	Belfry	41514	606-237-0015
Pike	Hurricane Fire Protection District	2981 Hurricane Road	Pikeville	41501	606-478-8508
Pike	Island Creek Fire Protection District	P. O. Box 3224	Pikeville	41502	606-432-0114
Pike	Johns Creek Fire Protection District	8094 Meta Highway	Pikeville	41501	606-631-1826
Pike	Kimper Fire Protection District	104 Fire Station Road	Kimper	41539	606-631-3111
Pike	Lookout Fire Protection District	Box 56	Lookout	41542	606-754-8691
Pike	Marrowbone Fire Protection District	P. O. Box 191	Regina	41559	606-754-5511
Pike	Millard East Shelbiana Fire Protection District	P. O. Box 2764	Pikeville	41502	606-432-3443
Pike	Phelps Fire Protection District	P. O. Box 116	Phelps	41553	606-456-3642
Pike	Shelby Valley Fire Protection District	P. O. Box 388	Robinson Creek	41572	606-639-9872
Pike	Sycamore Fire Protection District	P. O. Box 277	Ashcamp	41512	606-754-4698
Pike	Turkey Creek Fire Protection District	421 Taylor Fork Road	Turkey Creek	41514	606-237-7117
Pike	Upper Pond Creek Fire Protection District	Box 161	Pinson Fork	41555	606-353-9775
Pike	Shelby Creek Fire Protection District	P. O. Box 324	Dorton	41520	606-639-0188